

GLOBAL SALES NETWORK



R Series 8.0/10.0t Diesel



CE CERTIFICATE



ISO14001: 2004



ISO9001: 2008

HANGCHA GROUP CO., LTD.
(Zhejiang Hangcha Imp. & Exp.Co.,Ltd.)

www.hcforlift.com

Add:398 Shi Qiao Road, Hangzhou Zhejiang province, China(310022)
Factory site:No.88,Donghuan Rd., Economic Development Zone Lin'an, Zhejiang, China(311305)
Tel: +86-571-88926755
Fax: +86-571-88926789 88132890
E-mail: sales@hcforlift.com

HANGCHA GROUP CO., LTD. Reserves the right to make any changes without notice concerning colors, equipment, or specifications detailed in this brochure, or to discontinue individual models. The colors of trucks, delivered may differ slightly from those in brochures.

2012 VERSION 1/COPYRIGHT 2012/03

HANGCHA GROUP CO., LTD.

R series 8.0 - 10.0t forklift specification

		HANGCHA GROUP					HANGCHA GROUP				
		CPCD80					CPCD100				
		RG16	RG17	RG25	RW14	RW28	RG16	RG17	RG25	RW14	RW28
General	1 Manufacture	HANGCHA GROUP									
	2 Basic model	CPCD80									
General	3 Type	RG16	RG17	RG25	RW14	RW28	RG16	RG17	RG25	RW14	RW28
	4 Power type	Diesel									
General	5 Rated capacity	kg									
	6 Load center	mm									
General	7 Lift height	mm									
	8 Free lift height	mm									
Dimensions	9 Fork size	L×W×T									
	10 Fork spread(outside)	Min. / Max.									
Dimensions	11 Mast tilt range	F / R									
	12 Fork overhang(Wheel center to fork face)	mm									
Dimensions	13 Length to face of fork	mm									
	14 Overall width	mm									
Dimensions	15 Mast lowered height	mm									
	16 Mast extended height	mm									
Dimensions	17 Overhead guard height	mm									
	18 Turning radius(outside)	mm									
Dimensions	19 Min.right angle aisle width	mm									
	20 Min.right angle stacking aisle width (Add load length and clearance)	mm									
Performance	21 Speed	km/h									
	22 Lifting(Full load)	mm/sec									
Performance	23 Max.gradeability(Full load)	%									
	24 Self weight	kg									
Wheels & tires	25 Tyres	mm									
	26 Tread	mm									
Wheels & tires	27 Wheelbase	mm									
	28 Ground clearance	mm									
Wheels & tires	29 Battery	Voltage / Capacity(5HR)									
	30 Voltage / Capacity(5HR)	V/Ah									
Power & transmission	31 Model	CY6102BG	YC6B125	LR6M3	6BG1QP	QSB4.5	CY6102BG	YC6B125	LR6M3	6BG1QP	QSB4.5
	32 Manufacture	CHINA	CHINA	CHINA	ISUZU	CUMMINS	CHINA	CHINA	CHINA	ISUZU	CUMMINS
Power & transmission	33 Rated output / r.p.m.	kw	81 / 2500	92 / 2200	92 / 2200	84.6 / 2200	82 / 2200	81 / 2500	92 / 2200	92 / 2200	84.6 / 2200
	34 Rated torque / r.p.m.	N · m	353 / 1700	463/1400~1700	450/1400~1600	411/1400~1600	488 / 1500	353 / 1700	463/1400~1700	450/1400~1600	411/1400~1600
Power & transmission	35 No.of cylinder	6									
	36 Bore×Stroke	mm									
Power & transmission	37 Emission STD.	Stage IIIA / Tier 3									
	38 Displacement	cc	5785	6871	7120	6494	4460	5785	6871	7120	6494
Power & transmission	39 Fuel tank capacity	L	120	120	120	120	120	120	120	120	120
	40 Manufacture	CHINA									
Power & transmission	41 Type	Powershift									
	42 Stage	FWD/RVS									
Power & transmission	43 Operating pressure	MPa									
	44 For attachments	19.5									

- Special lifting height available.
- Attachment available.
- The specifications in the table are for standard models only. For further information please contact us.
- Specifications are subject to change without notice. Note: * With suspension seat or cabin.

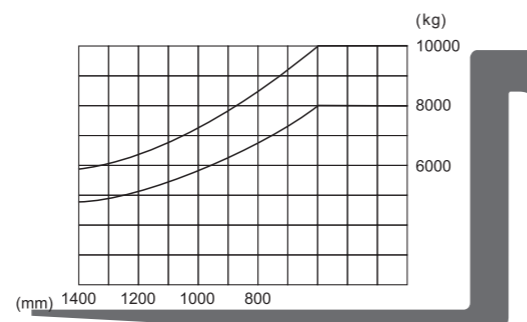
R series 8.0 - 10.0t forklift mast specification:

Type	Model	Overall height		Free lift	Tilt range		Capacity	
		Lowered	Extended		Without backrest	FWD		RWD
Wide view mast	8M	2500	2450	3710	200	6	12	8000
		2700	2550	3910	200	6	12	8000
		3000	2700	4210	200	6	12	8000
		3300	2850	4510	200	6	12	8000
		3600	3000	4810	200	6	12	8000
		4000	3200	5210	200	6	12	8000
		4300	3400	5510	200	6	6	8000
		4500	3500	5710	200	6	6	8000
		4800	3650	6010	200	6	6	7600
		5000	3750	6210	200	6	6	7600
		5500	4050	6740	200	3	6	7300
		6000	4300	7240	200	3	6	6900
Wide view mast	10M	2500	2600	4055	200	6	12	10000
		2700	2700	4255	200	6	12	10000
		3000	2850	4555	200	6	12	10000
		3300	3000	4855	200	6	12	10000
		3600	3150	5155	200	6	12	10000
		4000	3350	5555	200	6	12	10000
		4300	3550	5855	200	6	6	10000
		4500	3650	6055	200	6	6	10000
		4800	3800	6355	200	6	6	9500
		5000	3900	6555	200	6	6	9500
		5500	4200	7055	200	3	6	8500
		6000	4450	7555	200	3	6	7500

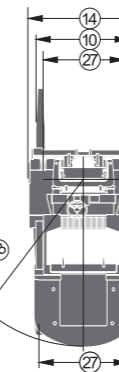
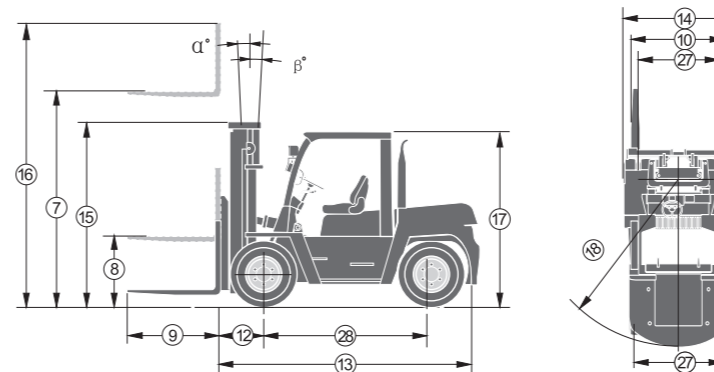
Note: with integral sideshifter minus 400Kg.



LOAD CHART



DIMENSIONS



Frame

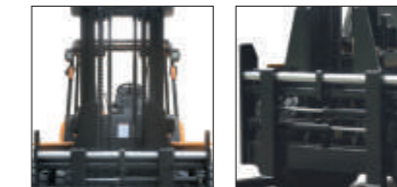
Vertical sides help the driver work safely with less damage, even in an area with low-level obstructions.

Thick chassis plates resist distortion, reduce damage and minimise refurbishment costs.

The wide mast, low scuttle and high seating position gives the operator an excellent view of the forks and of the way ahead-reducing load damage and accidents.

Well positioned lights ensure optimum vision to both the front and back-essential in containers.

Much attention has been given to the carriage design, with an integral fork positioner.



Easier maintenance and servicing

Along with the kind of engineering that promises unsurpassed performance and productivity in all applications, our forklifts are designed with many features that facilitate maintenance and servicing. For example, the wide-opening top panel and radiator cover are equipped with gas stays and convenient hand grips that enable quick access to the engine compartment.

Non-slip floor and step

The wide-open step is not only convenient to access but safer thanks to anti-slip mats. To further improve safety in demanding work conditions, the floor board is constructed of embossed steel to reduce the possibility of slipping.



Options

- 2.5-6.0m duplex mast
- Special carriage and backrest
- Solid tyre
- Cabin
- Heater and air conditioner
- Other dimension forks
- Sideshifter
- Other attachment
- Fire extinguisher
- Suspension seat
- Dual air cleaner or special air cleaner
- Rear working light
- Customer painting

